



BOUTIQUE. CO

AUDLEY  
HOUSE

FITZROVIA


---

## THE BOUTIQUE COLLECTION

---

Audley House, 12-12a Margaret Street, London, W1W 8RH

---



## WELCOME TO AUDLEY HOUSE

**Audley House is a stunning Grade II listed building dating back to the early 20th century, thoughtfully refurbished to become a sleek and stylish workplace option in Fitzrovia, one of London's premier media districts.**

With interiors that dazzle, featuring an impressive combination of period interior architecture and crisp contemporary design touches, it's hard not to be inspired while working away in one of the self-contained office spaces contained within. Alongside office space, Audley House also offers a range of features to make every working day a little easier, including meeting room access and a casual break-out area to use as a respite from your desk.

Built by J.W. Simpson and M. Ayrton in 1907, Audley House is a classic example of architecture at the turn of the 20th century, constructed out of red brick with stone dressings and a slate roof.

It originally served its purpose as bachelor flats, providing residents of Fitzrovia with a beautiful home in one of the Bohemian centres of London that has been popular with countless creatives, including Robert Louis Stevenson, Virginia Woolf, Boy George, and members of Coldplay.

Now notorious for media, fashion, and a cosmopolitan way of life, Fitzrovia is a wonderful place to do business.

“

**The beautiful Victorian features and earthy colours sit companionably alongside the on-trend Scandinavian furniture.**

”

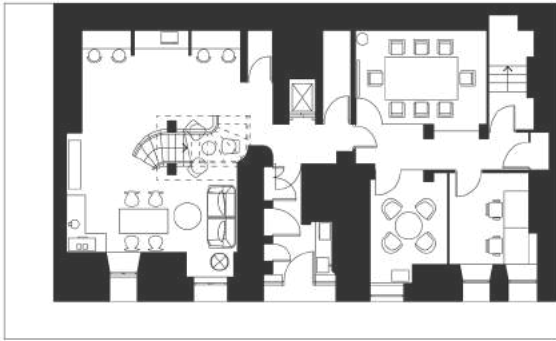


# THE BOUTIQUE COLLECTION

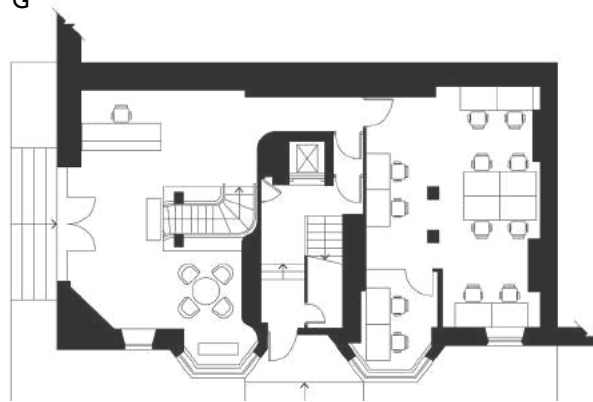
Floor plans



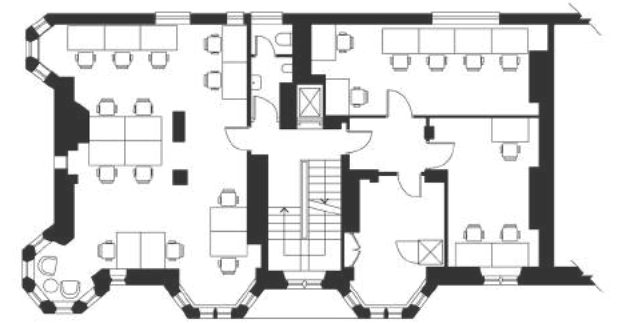
LG



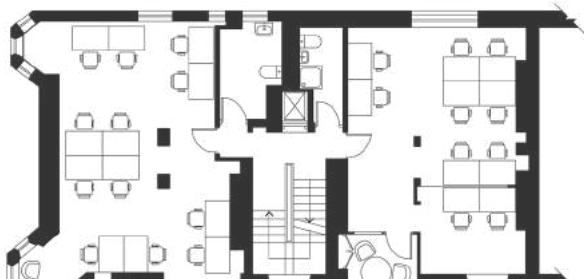
G



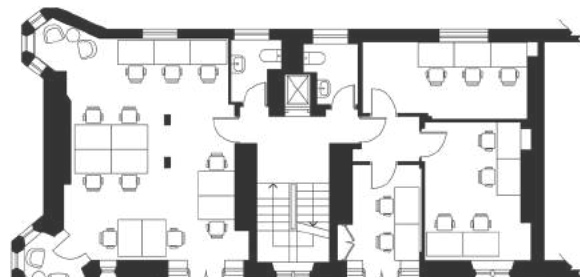
I



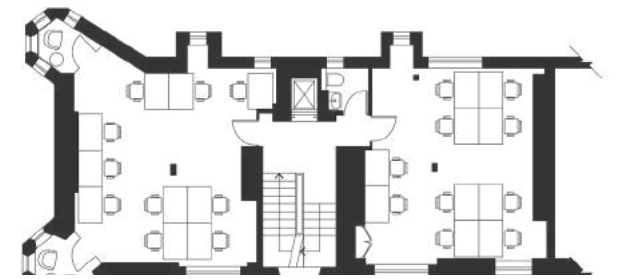
2



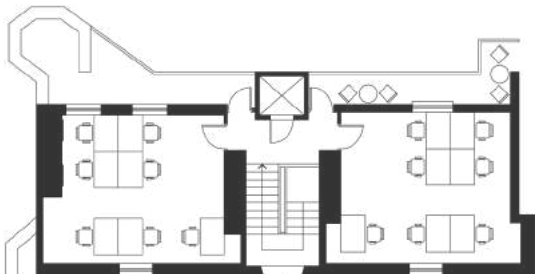
3



4



5







## THE BOUTIQUE COLLECTION

Choose your workspace



## FEATURES AND FACILITIES

- Reception services
- 24-hour access
- Dog-friendly
- Passenger lift
- Barista-style coffee
- Fully furnished
- Inspiring design
- Designed for wellbeing
- Part of The Boutique Members Club
- Break-out areas
- Showers
- Fresh airflow
- Hand sanitising stations and daily cleaning
- Wifi
- Business grade fibre-optic broadband
- Rent, business rates, utilities, service charge and building insurance inclusive
- Mailing and trading address

## CHOOSE YOUR WORKSPACE



### Private Offices

A collection of high-quality private flexible serviced offices.



### Meeting Rooms

Thoughtfully-designed meeting rooms available on-demand.



### Membership

This workplace is part of the Boutique Members Club, work remotely from the lounges from just £70 per month.



### Membership + Virtual Office

Enjoy a professional trading address with the flexibility to work in any of our Boutique Members Club lounges.





---

## THE BOUTIQUE COLLECTION

---

Map location

---

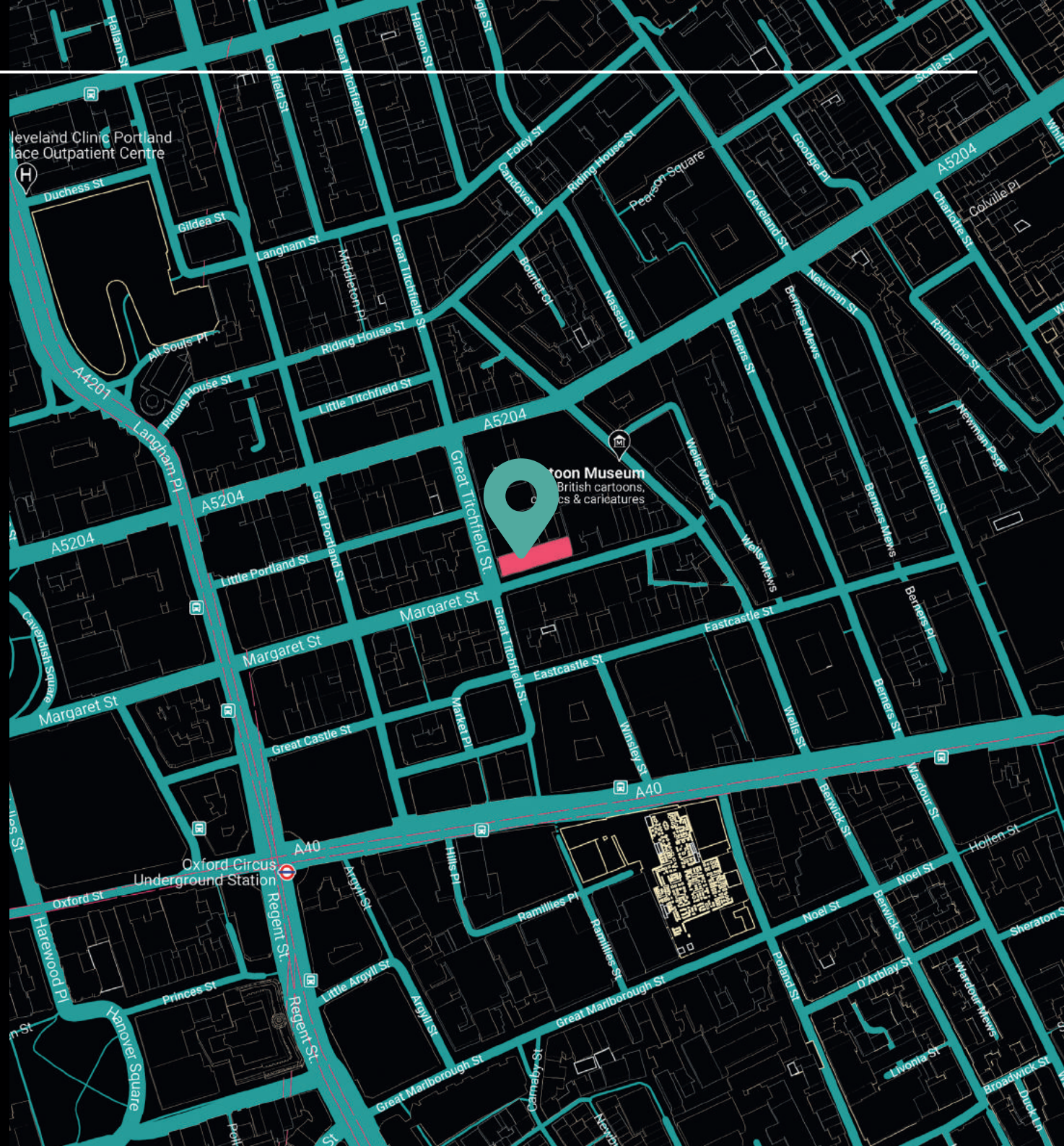
## LOCATION

**Audley House,  
12-12a Margaret Street  
London  
W1W 8RH**

Audley House sits in Fitzrovia, just north of Soho and right behind Oxford Street.

It's easy to reach from elsewhere in the capital via the underground thanks to its close proximity to major transport hubs, including Tottenham Court Road, Goodge Street, Bond Street, and Oxford Circus.

It's also cyclist-friendly and has a Santander bike docking station just two minutes' walk away, so if you're a keen cyclist you've got everything you need to commute that way.





---

## THE BOUTIQUE COLLECTION

---

Things to do nearby

---



## THINGS TO DO NEARBY

### OXFORD STREET SHOPPING

A mere minutes' walk from Oxford Street, Audley House is perfectly positioned for taking impromptu lunchtime shopping trips.

### RELAX IN REGENTS PARK

Audley House is just a few minutes on foot from Regents Park, giving you quick access to one of London's most beautiful green spaces.

### WE RECOMMEND

 Riding House Café

 The Wigmore

 The Langham





BOUTIQUE. CO

# AUDLEY HOUSE

FITZROVIA

GET IN TOUCH WITH US:

☎ 020 3405 7000

✉ [enquiries@boutique.co](mailto:enquiries@boutique.co)

FOLLOW US:



[@boutiqueworkco](https://www.instagram.com/boutiqueworkco)

[www.boutique.co](http://www.boutique.co)

